



The Best of Patagonia, Buenos Aires, and Santiago

November 7-19, 2014

with *optional* pre-trip extension to Iguazú Falls

November 4-8, 2014

MAIN PROGRAM ITINERARY

Friday, November 7

U.S./BUENOS AIRES

Depart the U.S. on an overnight flight to Buenos Aires, Argentina

Overnight flight
(meals aloft)

Saturday, November 8

BUENOS AIRES

Arrive in Buenos Aires. Transfer to our hotel located in the heart of the fashionable Recoleta neighborhood. An afternoon walking tour of the surrounding area will introduce us to this grand metropolis on the banks of the River Plate. Begin our journey with an exploration of the traditional neighborhood of Palermo, strolling along its large parks, rose gardens and lakes, the *porteños* (residents of Buenos Aires) favorite place to practice sports or take long walks. Visit Plaza San Martín and its historic monuments and Calle Florida with its bustling shops. We end our tour in the Recoleta district, one of the most fashionable and aristocratic areas of the city, which includes South America's most opulent and extraordinary cemetery-- the Recoleta Cemetery, the much-revered resting place of patriarchs, presidents, and the beloved Eva Perón. The Recoleta is also a cultural center harboring many

art institutions and featuring 19th century French architecture and many beautiful buildings. Gather for a welcome dinner tonight.

Loi Suites Recoleta
(D)

Sunday, November 9

BUENOS AIRES

Feel the European influence of this capital city as you tour the major sites. Highlights include the Plaza de Mayo, the National Cathedral and Casa Rosada (Presidential Palace), the famed pink building from which Eva and Juan Perón addressed the masses. See La Boca with its colorful tin houses and explore bohemian San Telmo, one of the oldest neighborhoods in Buenos Aires with early-19th –century colonial buildings and cobblestone streets. Conclude with a tour of the Argentinean collection at the Fine Arts Museum. In the evening, gather for dinner and then enjoy a tango performance at one of the most authentic tango venues in Buenos Aires.

Loi Suites Recoleta
(B,L,D)

Monday, November 10

BUENOS AIRES / SAN ANTONIO DE ARECO

Spend today immersed in gaucho culture and in the vast landscapes of the pampas plains. Visit the town of San Antonio de Areco and learn about the gaucho’s history and way of life. Meet with a local silversmith who talks to us about the traditional methods of the silver trade and visit leather craft and wood workshops. Continue on to an authentic private *estancia* (ranch) where we find what goes into the preparation of a traditional Argentinean *asado* meal. After a barbecue lunch, the amateur gauchos among us will have the opportunity to go for a horseback ride across the pampas with its huge empty skies, endless horizons and pastures spotted with cattle.

Loi Suites Recoleta
(B,L)

Tuesday, November 11

BUENOS AIRES/EL CALAFATE

Fly to El Calafate on the southern shore of Lake Argentino and transfer to the hotel, our base to experience Patagonia’s Glacier National Park. The remainder of the day is to explore the quaint town of El Calafate and have dinner at a local restaurant.

Hotel Kosten Aike
(B,D)

Wednesday, November 12

PERITO MORENO GLACIER

Today, we drive through Glaciers National Park, declared by UNESCO as part of the Natural Heritage of Humanity. The park boasts 47 major glaciers, the only remains of the last Ice Age, and the third-largest concentration of ice in the world. The Perito Moreno Glacier rises nearly 250 feet above the Iceberg Channel, spans three miles across, and reaches back 22 miles up the Andes. This glacier offers an overwhelming sight and deafening roar every time one of its ice towers breaks into multiple icebergs and plunges into the water. While touring we will stop at various lookouts hoping for fabulous views of the glacier calving. A boat ride on Lake Argentino will afford an opportunity to view the impressive glacier up close.

Hotel Kosten Aike

(B,L)

Thursday, November 13

ESTANCIA CRISTINA

Early morning transfer to Puerto Bandera to board a boat on Lake Argentino to Estancia Cristina, a historical sheep ranch. Enter the North Channel sailing among icebergs and amazing views of mountains, culminating with the truly spectacular Upsala Glacier, the largest of all the lake's glaciers. Upon arrival at Estancia Cristina, we will learn about the geology of the area and the history of this ranch. This estancia is a remarkable destination with abundant wildlife: eagles, black-necked cranes, condors, and the occasional puma make their home here. This day may be modified due to lake conditions.

Hotel Kosten Aike

(B,L)

Friday, November 14

EL CALAFATE / TORRES DEL PAINE NATIONAL PARK / PUERTO NATALES

Depart El Calafate today and ascend the high Patagonian plateau from where you can appreciate the whole Santa Cruz River Valley, Lake Argentino, and the Andes Mountains in the background. Watch for guanaco and other wildlife. After driving through Patagonia's windswept landscape, cross from Argentina into Chile through the *Cancha Carrera* Pass. Arrive in Puerto Natales and transfer to our hotel.

Hotel Remota

(B,D)

*Saturday, November 15 –
Sunday, November 16*

TORRES DEL PAINE AND SURROUNDING AREA

By far, the most impressive sight in southern Chile is Torres del Paine National Park, known as the crown jewel of Patagonia. It was declared a Biosphere Reserve by UNESCO in 1978. The dramatic mountain

formations of towering rock, windswept pampas, ice fields, and glaciers, make it an impressive and unforgettable sight. We'll look out for herds of guanacos and rheas, flamingos, condors, foxes, geese, and black-necked swans. Lakes and lagoons in hues of blue, green, gray and ochers abound. The park is surrounded by impressive mountains including the famous Cuernos del Paine (Horns of Granite), twisted snow-dusted pillars of gray granite that rise from the flat Patagonian plain. Hike or ride horses with one of our expert guides or simply relax in the park and its surrounding wilderness.

Hotel Remota
(Bx2,Lx2,Dx2)

Monday, November 17

PUERTO NATALES / SANTIAGO

In the morning, drive along the Strait of Magellan's shoreline to a large colony of Magellanic penguins where you can watch the antics of these delightful creatures. Arrive in Punta Arenas, Chile's southernmost city, located on the Strait of Magellan opposite Tierra del Fuego. Founded in 1848, in its golden age it served as a port of call for all ships circumnavigating the world. Transfer to the airport for a flight to Santiago. Evening is free.

Plaza del Bosque
(B)

Tuesday, November 18

SANTIAGO / U.S.

A morning city tour of Santiago will introduce us to this city at the foot of the Andes. Included in our visit will be the remarkable collection at the newly re-opened Chilean Museum of Pre-Colombian Art, with native art treasures from the Americas dating back 4,500 years. Visit the city's historical center, including La Moneda, the reconstructed Neoclassical building that houses the executive branch of Chile's government. Mark the journey's end with a celebratory farewell lunch at the historical Viña Santa Rita in the Maipo Valley just outside of Santiago. This area is the fertile home of many of Chile's finest wineries. We will enjoy a delightful farewell lunch in the classical colonial mansion at the vineyard surrounded by ornamental gardens and centuries-old trees. The remainder of the afternoon is unscheduled before an overnight return flight home.

Overnight Flights
(B,L, Meals Aloft)

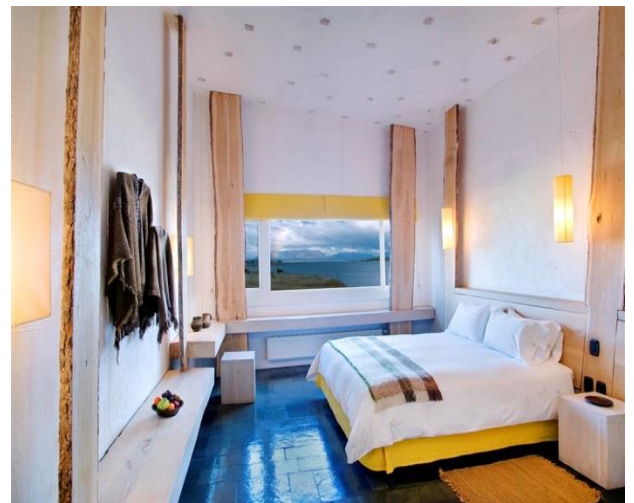
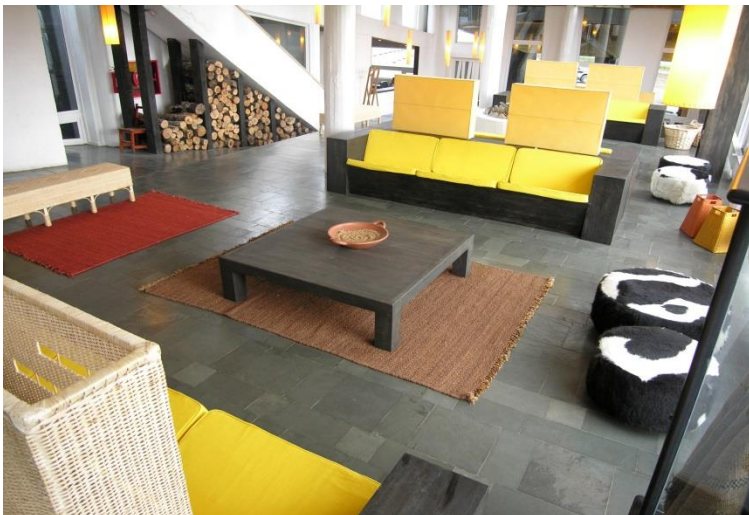
Wednesday, November 19

ARRIVE HOME TO U.S.

Arrive this morning in the U.S. and connect to your home airport.

ABOUT THE REMOTA LODGE, PUERTO NATALES CHILE:

In the Chilean Patagonia, we stay at an all-inclusive lodge in Puerto Natales, the gateway to Torres del Paine National Park. Exquisite vistas, ultramodern rooms, fine dining, cocktails, wine with meals, expert guides, open-air Jacuzzis, heated infinity pool, and all the service, comforts and amenities of a five-star hotel. The architecture of the Remota is designed to bring its guests into intimate contact with the magnificent natural world of the remote Patagonian peninsula.



PRE-TRIP EXTENSION TO IGUAZÚ FALLS:

November 4-8, 2014

--On November 11, 2011, Iguazú Falls was announced as one of the seven winners of the New Seven Wonders of Nature by the New Seven Wonders of the World Foundation.

Roaring out of the jungle and hurtling over cliffs between Brazil and Argentina, the Iguazú Falls are one of the seven natural wonders of the world. The two nights at this extraordinary place offer ample time to relax and see the cataracts surrounded by luxuriant rain forest, beautiful exotic birds (toucans, caracas, and parrots), and intriguing bromeliads and butterflies. Walk along the upper and lower trails for close-up views of the many different falls. Exploration from the Brazilian side is thrilling. Take a Zodiac boat to see the falls from the lower river, approaching the base of the falls. Fly to Buenos Aires to enjoy an extra night in the captivating city before the main program begins. Extension includes three-night's accommodations (taxes included) buffet breakfast every day, entrance fees, transfers, and leadership. Airfare is additional and quoted separately. Our visit to the Brazilian side of the falls requires a visa.

Accommodations: Hotel Lois Suites Iguazú and Loi Suites Recoleta Buenos Aries



COSTS:

Program Cost..... **\$7,995 per person, double occupancy**

Single Supplement..... **\$1,475 single supplement** (subject to availability, first-come, first-served)

Deposit Amount..... **\$800 per person**

Sample Airfare (not included, quoted separately)..... **Miami: \$1,300**
Washington Dulles: \$1,435
JFK: \$1,350

Optional Pre-trip extension to Iguazú Falls:..... **\$1,495 per person, double occupancy**

Single Supplement..... **\$495 single supplement**

Rates for the extension are based on a minimum of 10 guests. Airfare to Iguazú is not included and quoted separately. The cost for economy class airfare Buenos Aires / Iguazú Falls / Buenos Aires at approximately \$400 (as of November 2013) is additional.

TERMS AND CONDITIONS:

PROGRAM COST INCLUDES

Accommodations and meals as specified in the itinerary; all land and water transportation; in-tour flights within Argentina and Chile; Buenos Aires/El Calafate, Punta Arenas/Santiago, provided increases in the in-tour airfare after the initial pricing of this program are not included – see below; professional guides and tour manager throughout; airport transfers for group flights; domestic airport departure taxes; entrance fees; baggage handling; gratuities to guides and drivers; pre-departure information; coordination and administration.

TOUR COST DOES NOT INCLUDE

US domestic and international airfare; meals not specified in the itinerary; personal items such as laundry, fax or telephone calls, liquor, room service, passport fees, reciprocity fee into Argentina (approx. \$160 and must be paid prior to arrival to Argentina), cost of Brazilian tourist visa (*optional* Iguazú Falls extension), excess baggage charges, private transfers, medical expenses, travel insurance, optional extensions or deviations from the scheduled tour. Any increases in the in-tour airfare (included as part of the main program cost), security, or fuel surcharges imposed after the initial pricing of this program are not included. Flights for the *optional* trip extension to Iguazú Falls, if applicable, (Buenos Aires / Iguazú / Buenos Aires) are not included.

RESERVATIONS, DEPOSITS, AND FINAL PAYMENT

To reserve a space on this tour, please mail a deposit of \$800 per person payable to "ROYAL ADVENTURES", along with the completed reservation form to: Office of Special Programs, Washington & Lee University, 204 W. Washington Street, Lexington, VA 24450. Deposits may be charged to a credit card. Reservations are acknowledged in order of receipt. Final payment is due August 1, 2014 and must be paid by check only. Royal Adventures handles all invoicing. CST #2009579-40

CANCELLATIONS AND REFUNDS

Refunds less a cancellation fee of \$150 per person are made if the Office of Special Programs at Washington & Lee is notified in writing on or before March 7, 2014. Cancellations received between March 8, 2014 and August 1, 2014 are subject to a \$400 per person cancellation fee. No refunds are made after August 1, 2014. There are no refunds for unused meals, accommodations or other trip features.

TRAVEL INSURANCE

We highly recommend the purchase of travel insurance. An application for travel insurance will be sent upon confirmation. Neither the Washington & Lee University nor Royal Adventures accept liability for any airline cancellation penalty incurred by the purchase of a non-refundable airline ticket or other expenses incurred by tour participants in preparing for the tour.

QUESTIONS

Please call Rob Fure or Susie Thompson, Office of Special Programs (540) 458-8723, or Eric Holman, Royal Adventures (925) 820-6260 or 1 (800) 453-4754.

HIGHLIGHTS:

- Visit two capital cities: **Buenos Aires**, the “Paris” of South America and **Santiago**, at the foot of the Andes.
- Marvel at the newly restored **Colón Opera House** in Buenos Aires
- Observe **Patagonia’s unique wildlife**, including guanaco, rhea, flamingo, magnificent Andean condors and delightful Magellanic Penguins.
- View the impressive **Perito Moreno** and **Upsala Glaciers** up-close
- Journey to **Estancia Cristina**, a historical Patagonian sheep ranch surrounded by magnificent Patagonian landscape.
- Explore **Torres del Paine National Park**, hidden at the southernmost end of the Andes, one of the newest nature reserves in South America and walk near monolithic granite spires, glacial lakes, and waterfalls.

- Visit the heart of **Chile's wine district**
- Spend a day at **an authentic and historical estancia** (ranch) in the pampas plains

WHAT TO EXPECT:

This exclusive expedition is designed for Washington & Lee, family, and friends who are interested in learning about the history, culture, and superb natural areas of Argentina, Chile and the region of Patagonia. This is a moderately active program. Some walks in the Torres del Paine National Park area are approximately one mile long (sometimes over uneven terrain); walks can be longer at the participant's discretion. Typically, the weather is warm in Buenos Aires (approx. 70°-75° F daytime) and Santiago (approx. 75°-80° F at noon), and temperate in El Calafate. Sites in southern Patagonia (Glaciers National Park and Torres del Paine) are usually quite cold in the early morning and late evening, but can be sunny and quite warm during the day. Winds, which can be strong, are frequent in the southern Patagonia area, and weather as a general rule, is unpredictable. Since some travel will be in remote areas, everyone must be flexible concerning time schedules, food, weather, and dust. In order to enjoy this trip, a spirit of adventure and anticipation, and the desire to explore spectacular natural areas are musts. There are a couple of relatively long drives, which are necessary for the chance to explore the superb scenery of Patagonia. Travel is by regular scheduled jet aircraft, boat, and motorcoach. There are no altitude issues on this trip. On the optional pre-trip extension to Iguazú Falls, the weather is tropical and rain is not uncommon. Expect temperatures to be between 75°-85° F.

