



A SUMMER SOJOURN IN SCANDINAVIA

A CELEBRATION OF
WASHINGTON AND LEE UNIVERSITY

ABOARD THE DELUXE *L'AUSTRAL*

June 19 - 29, 2016



WITH W&L PRESIDENT KENNETH P. RUSCIO
and LAMAR J. R. CECIL, KENAN PROFESSOR OF HISTORY, EMERITUS



Dear W&L Traveler,

To be in Scandinavia during the summer solstice is a truly magical experience. The lingering glow of the longest days of summer lends a special aura to landscapes and seascapes alike. Washington and Lee has tailored this journey from the Baltic Sea to the fjords of Norway—surely one of the loveliest cruise itineraries in the world—to take full advantage of these memorable days.

Among the highlights of our itinerary are Stockholm, the most beautiful of the Scandinavian capitals; the Swedish archipelago, the 30,000 islands that lead from Stockholm harbor to the Baltic Sea; and Copenhagen, where we'll explore the castles and museums of this cosmopolitan and bustling city. Then it's on to the spectacular fjord lands of Norway, where from Lysefjord in the south to Nordfjord in the north, we'll behold these natural wonders in all their marvelous variety—crystal-clear fjords, alpine peaks, and stunning waterfalls. Along the way, we will discover Stavanger, Europe's largest wooden city, and the 1,000-year-old Hopperstad Stave Church in Vik before ending our voyage in the colorfully ancient Hanseatic town of Bergen.

"Summer Sojourn in Scandinavia" will conclude Washington and Lee's year-long celebration of its historic capital campaign, "Honor Our Past, Build Our Future." W&L alumni, parents, and friends have responded generously to the call. President Kenneth P. Ruscio and his wife Kim will travel with us on this special voyage. Former Kenan professor of history and popular W&L Traveller lecturer Lamar Cecil will join us as well to enhance our understanding of the history of Scandinavia and this region of the Baltic Sea.

Our home for this journey is the five-star *L'Austral*, an elegant small ship that will make cruising the picturesque fjords, archipelagos, and shores of Scandinavia an experience in luxury and comfort. If you wish to cruise and explore one of Europe's most beautiful and unspoiled regions in extraordinary style, do join fellow W&L travelers on this unforgettable journey.

Sincerely,

Rob Fure, Ph.D.
Director of the W&L Traveller

W & L HOST and FACULTY



Kenneth P. Ruscio, a 1976 graduate of Washington and Lee, was elected the 26th president of his alma mater in 2006. A politics major at W&L, President Ruscio earned his master's and Ph.D. degrees from Syracuse University's Maxwell School. He returned to W&L in 1987 as dean of freshmen and assistant professor of politics. He later served as associate dean of the Williams School before spending four years as dean of the Jepson School of Leadership Studies at the University of Richmond.

President Ruscio is the author of numerous articles and essays and the 2004 book, *The Leadership Dilemma in Modern Democracy*. He currently serves as on the board of the Council of Independent Colleges and is Past Chair of the Board of the American Association of Colleges and Universities. President Ruscio will be joined by his wife Kimberley O'Donnell Ruscio.



Lamar Cecil is the former William R. Kenan, Jr., Professor of History at Washington and Lee University, specializing in European History. He is the author of numerous books and articles and has delivered many papers relating to the history and politics of Germany. Lamar is a veteran teacher of W&L's Alumni Colleges, lecturing on a variety of topics from 19th-century Europe and Russia, to the history of the Venetian Empire and the Italian Renaissance. Lamar is the author of four books on imperial Germany, including an award-winning two-volume biography of Kaiser Wilhelm II. Professor Cecil will be joined by his wife Geri Cecil.

GRIEG AND THE ROMANTICISM OF THE NORTH

Not only is Edward Greig considered to be the greatest Norwegian composer of all time, as well as one of the most important romantic composers, he has also written music for the piano, voice and cello. Nicknamed "the Chopin of the North," his style is characterized by a harmonious blend of lyricism and nationalism. Aboard L'Austral, we invite you to set sail in the footsteps of this musical genius, immersing yourself in the fascinating world of northern European romanticism, accompanied by the music of those who inspired them, from Mozart to Schubert, Chopin, Liszt, Dvorak and Tchaikovsky. And to introduce you to this wonderful music, PONANT has chosen to invite four renowned artists along on this Scandinavian cruise:

- Karen Vourc'h**, Soprano
- Emmanuelle Bertrand**, Cellist
- Pascal Amoyel**, Pianist
- Florent Héau**, Clarinetist

This wonderful group will accompany you to each port of call under the direction of, artistic director, lecturer and musicologist Alain Duault.



ITINERARY



Sunday, June 19, 2016

FLY FROM THE USA

Monday, June 20

STOCKHOLM, SWEDEN

Arrive in Stockholm, Sweden's capital, and transfer to the deluxe *Sheraton Stockholm*. Enjoy a welcome cocktail reception at the hotel.

Tuesday, June 21

STOCKHOLM

Stockholm, spread among 14 islands and preserving its medieval character, is considered by many to be the most beautiful of the Scandinavian capital cities. Our morning tour includes City Hall, the site of the Nobel Prize banquet, Gamla Stan (Old Town), and Storkyrkan (the Great Church). Also view the Main Square and the Royal Palace, and visit the Vasa Museum, home to maritime archaeology exhibits and the world's only preserved 17th-century ship, the Vasa warship, which sank on its maiden voyage. The afternoon is at leisure. This evening enjoy the festive atmosphere associated with the Summer Solstice. (B)

Wednesday, June 22

STOCKHOLM | EMBARK

This morning we pass beautiful villas and gardens as we journey to Drottningholm Palace, home to Sweden's Royal Family. This 17th-century palace and its grounds are a UNESCO World Heritage site. Visit the nearby Drottningholm Palace Theatre, built in the mid-18th century, and the oldest theater in Europe still holding performances. In the late afternoon, embark *L'Austral* and enjoy the stunning views as we cruise the Stockholm archipelago. (B,L)

Thursday, June 23

AT SEA (B,L,D)

Friday, June 24

COPENHAGEN, DENMARK

The historic capital of Denmark, Copenhagen is appreciated as a cultural hub for Scandinavia. With its beautiful parks, open squares, stately palaces and fine houses, the city beckons visitors with its welcoming atmosphere. Our tour passes by Amalienborg Palace, home to the royal family, and visits Rosenborg Castle, displaying the crown jewels. Also visit the renowned classical and ancient art collections at the Ny Carlsberg Glyptotek. Afternoon at leisure, during which you may wish to visit Tivoli Gardens, before sailing for Norway. (B,L,D)

Saturday, June 25

LILLESAND, NORWAY | GRIMSTAD

Today we visit two of Norway's most charming villages. In Lillesand walk along welcoming streets of white-washed wooden buildings housing galleries, cafés and shops. The town is known for its summer profusion of roses and geraniums. In Grimstad visit the small museum dedicated to the playwright Henrik Ibsen who wrote his first drama, *Catalina*, here while working as a pharmacist's apprentice. (B,L,D)

Sunday, June 26

STAVANGER

Located on a peninsula jutting into the North Sea, Stavanger is a prosperous center that in the 18th century boasted a fleet that sailed the world over, transporting cargoes of herring. Today its prosperity is tied to oil. Explore Stavanger's

picturesque Old Town with its narrow streets and fine concentration of wooden structures. Some 170 houses from the 18th and early 19th century have been restored and protected. Visit the 12th-century Stavanger Domkirke, one of the best-preserved of Norway's medieval cathedrals, and the fascinating Norwegian Petroleum Museum. (B,L,D)

Monday, June 27

SOGNEFJORD | VIK | FLAM

This morning cruise along the spectacular Sognefjord, the world's longest ice-free fjord. Arrive at the port of Vik for a memorable full-day excursion including lunch, traveling inland through spectacular scenery. In Vik, visit the 12th-century Hopperstad Stave Church, one of the oldest wooden churches in Norway. Continue overland through the Vikafjellet Mountains to Voss. Later travel on the Flam Railway for a spectacular ride with panoramic views of mountains and waterfalls. (B,L,D)

Tuesday, June 28

OLDEN | BRIKSDAL GLACIER

Located on the stunning Nordfjord, Olden is the perfect gateway for exploring Jostedalsgreen National Park, home of the famous Briksdal Glacier, which is an arm of Jostedal Glacier, Europe's largest. Open-air "Troll Cars" offer unobstructed views of the park's high peaks and majestic waterfalls, before a walk to the edge of Briksdal Glacier. (B,L,D)

Wednesday, June 29

BERGEN | DISEMBARK | USA

Morning arrival in Bergen for disembarkation and transfer to the airport for flights home. (B)

Stockholm, Sweden



On this leisurely voyage from the Baltic Sea to the fjords of Norway, you will travel aboard the deluxe, five-star *L'Austral* one of the most beautifully conceived and technologically sophisticated small ships afloat. Designed in France and built in Italy, *L'Austral* boasts an elegantly understated aesthetic that one associates with European sensibility and craftsmanship.

LIFE ABOARD

Life aboard *L'Austral* is relaxed and refined, capturing the best of the French art of living well. Your comfort and well-being are the special responsibility of the impeccably trained staff, whose discreet yet attentive service has become legendary among discriminating travelers. Our goal is to make you feel as though you are sailing aboard your very own yacht.

CUISINE

The quality of food, its preparation, the social experience of a meal—all those things that make up the French art and science of gastronomy—are the objects of special care aboard the ships. Whether you are enjoying breakfast among friends, a sun-kissed lunch on one of the outside decks, or a delightful dinner in the elegant surroundings of the restaurants, the talented chefs showcase their expertise by bringing out the very best in local flavors.

RESPECT FOR THE ENVIRONMENT

The health of our planet, and especially its oceans, is a critical concern for us. We have taken care to certify all of our vessels as “green ships,” employing the most eco-friendly technology available today. As environmentally responsible ship operators, we not only comply with existing regulations; we anticipate new ones. We continually seek to share industry best

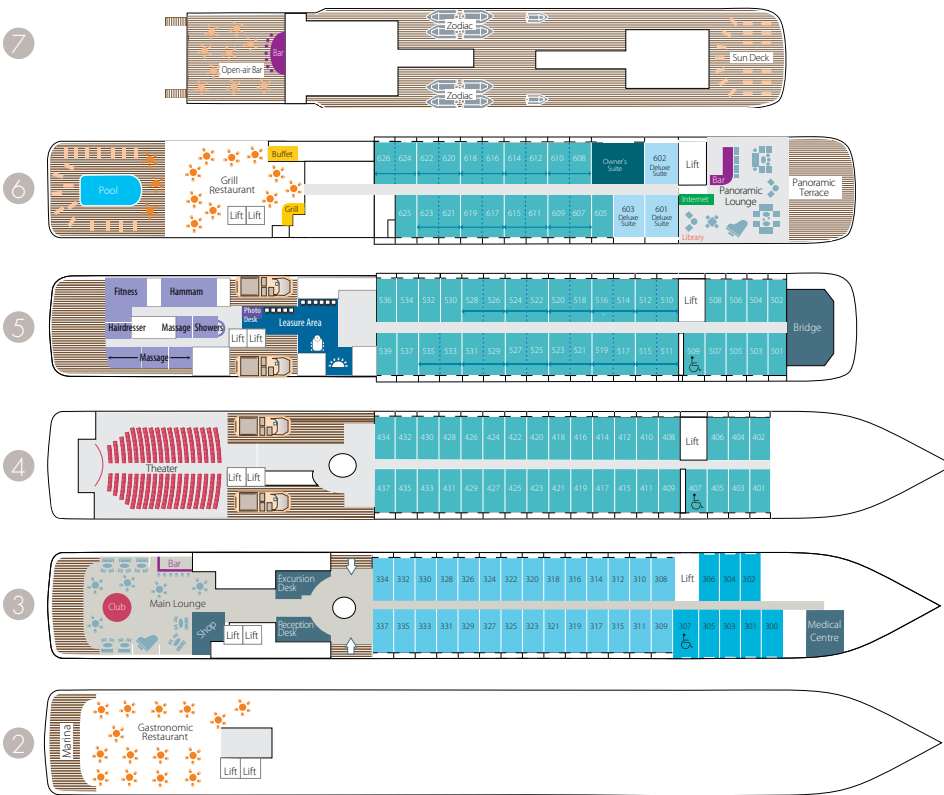
practices on matters ranging from increasing energy efficiency and reducing greenhouse gas emissions to waste treatment and recycling.

SAFETY, COMFORT & CONVENIENCE

L'Austral is equipped with the latest communication, navigational, and safety equipment and meets or exceeds USPHS and U.S. Coast Guard rules. It is also outfitted with a technologically advanced stabilizing system to minimize the effects of rough conditions at sea. Three passenger elevators serve all six decks. And public amenities include an outdoor heated pool, a theater/lecture hall, a well-stocked library, and a full-service salon, steam room, spa, and fitness center.

REDEFINING REST & RELAXATION

All suites and staterooms face outside and measure from 226 to 581 square feet (including the balcony), and all but eight have a balcony. Features and amenities include a king-size bed or twin beds, mini-bar, safe, individually controlled heat/air-conditioning, flat-screen TV, in-house movies, iPod docking station, wireless Internet access, and telephone. Bathrooms come equipped with a shower (or shower/bathtub), hair dryer, French bath products, and bathrobes. Laundry services and 24-hour room service are available throughout.



FARES PER PERSON

	DOUBLE OCCUPANCY	SINGLE OCCUPANCY
Superior Stateroom	\$5,990	-
Deluxe Stateroom	\$6,790	\$9,490
Prestige Stateroom - Deck 4	\$7,090	\$9,990
Prestige Stateroom - Deck 5	\$7,390	\$10,590
Prestige Stateroom - Deck 6	\$7,590	\$10,990
Deluxe Suite	\$8,490	-
Prestige Suite - Deck 5	\$9,490	-
Prestige Suite - Deck 6	\$9,890	-

Single accommodations are subject to availability.

2 Gastronomic Restaurant - Marina

3 28 Deluxe staterooms with private balcony
8 Superior staterooms - Main Lounge - Shop - Reception desk - Excursion desk - Medical center

4 35 Prestige staterooms with private balcony Theater

5 37 Prestige staterooms with private balcony (with 22 Prestige staterooms convertible into 11 Prestige suites) - Fitness - Beauty Corner Sothys™: Balneo, Hammam, Massage, Hairdresser - Relaxation room - Image & photo desk - Bridge

6 Owner's Suite - 3 Deluxe Suites with private balcony - 20 Prestige staterooms with private balcony (with 18 Prestige staterooms convertible into 9 Prestige suites)

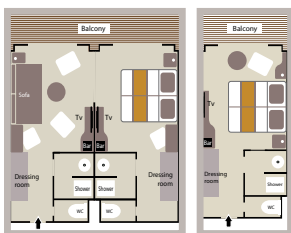
7 Open-air Bar - Sun Deck

UP TO 20 PRESTIGE SUITES

(398 sq.ft. + 86 sq.ft. private balcony)

UP TO 92 PRESTIGE STATEROOMS

(200 sq.ft. + 43 sq.ft. private balcony)



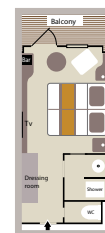
3 DELUXE SUITES

(290 sq.ft. + 54 sq.ft. private balcony)



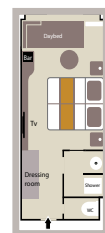
28 DELUXE STATEROOMS

(200 sq.ft. + 43 sq.ft. private balcony)



8 SUPERIOR STATEROOMS

(226 sq.ft.)



PROGRAM INCLUSIONS

Included

- 2 nights in Stockholm at the *Sheraton Stockholm* hotel, with breakfast daily
- Welcome cocktail reception in Stockholm
- Sightseeing in Stockholm as described
- 7-night cruise aboard the deluxe *L'Austral*
- Complete program of tours and excursions as described
- Welcome and farewell cocktail receptions aboard ship
- Captain's gala dinner
- All meals aboard ship including early riser's coffee & pastry, breakfast, lunch, afternoon tea, and dinner
- Open bar aboard ship, including select wines
- 24-hour room service (special selection)
- Enrichment program of lectures and discussions by Professor Lamar Cecil and W&L President Kenneth P. Ruscio
- Professional tour manager and cruise staff
- Physician aboard ship
- Comprehensive pre-departure materials
- Baggage handling and airport transfers abroad on the designated program arrival and departure dates
- Port taxes and charges
- Gratuities to shipboard personnel, porters, guides, and drivers

Not Included

- Airfare
- Airport taxes
- Fuel surcharge
- Visas and/or passport fees and/or immigration reciprocity taxes (if applicable)
- Trip cancellation and baggage insurance
- Meals and beverages other than those specified above
- Personal expenses (such as telephone, Internet, laundry service, hair salon services, à la carte spa treatments, etc.)

TERMS & CONDITIONS

Compagnie du PONANT, PONANT Group USA, LLC, and PONANT USA, LLC are hereinafter collectively referred to as "PONANT GROUP". Please read carefully the following terms and conditions, which constitute the sole, legally enforceable agreements between the passenger and PONANT GROUP and the tour's sponsoring organization.

PAYMENT SCHEDULE: In order to secure a booking, the guest is required to pay 25% of total cruise price upon confirmation. The final 75% is due by April 19, 2016.

CANCELLATION, MODIFICATION PENALTIES & REFUNDS: All cancellations or modifications must be in writing. Any and all guests not reporting for departure or prevented from reporting for departure or waiving for any reason whatsoever the benefit of services included in the program cannot claim any refund. PONANT GROUP shall not be required to refund any monies to any guests who must leave the cruise prematurely for any reason, nor shall PONANT GROUP be held responsible for any costs, fees, damages or causes of action which result from the transportation expenses incurred by guest's early departure.

For any deposited or fully paid booking, cancellation penalties will be assessed as noted below. These cancellation penalties are applicable on all services booked with PONANT GROUP.

- For cancellations received within 8 months of departure, by October 21, 2015, no cancellation penalty applies
- From October 22, 2015 up to 91 days prior to departure: 10% of full fare
- 90-61 days prior departure: 25% of full fare
- 60-46 days prior departure: 50% of full fare
- 45-31 days prior departure: 75% of full fare
- Less than 30 days prior departure: 100% of full fare.

TRAVEL INSURANCE: Passengers shall be responsible for subscribing to cancellation/luggage/assistance/repatriation/medical insurance(s).

ITINERARY: PONANT GROUP reserves the right to withdraw and/or cancel a sailing to make changes in the itinerary whenever, in its sole judgment, or in the judgment of the vessel owner or operator, conditions warrant it.

INDEPENDENT CONTRACTORS/LIMIT OF LIABILITY: The passenger agrees that PONANT GROUP acts as agent and/or trustee for any person, ground and maritime agents and subcontractors, who provide any service forming, or in connection with, any part of the cruise. Transportation services to the port of departure, transfers to the ship, including, as applicable, hotel room and restaurant bookings or guided tours, are performed by independent suppliers who are not employees of PONANT GROUP. In this respect, PONANT GROUP acts only as an agent and shall not be held liable for said services or for the acts or omissions of sub-contractors or other contractors.

PONANT GROUP shall not be held liable for bodily injury to, or death of passengers, or for loss of, or damage to luggage or other personal

belongings, unless it is proved that the carrier has infringed statutory obligations or that it or one of its employees or agents has committed gross negligence. However, in the event the liability of PONANT GROUP is incurred, such liability is limited (details available upon request).

PONANT GROUP shall in any case not be liable for failure of an improper performance when the same is due to or caused by the fault of the passenger; the unforeseeable or unavoidable fault of a third party unconnected with the provision of any services to be provided under the contract; unusual and unforeseeable circumstances beyond the control of PONANT GROUP; an event of "Force Majeure" such as a war, threat of war, riots, civil commotion, acts of God, terrorist activities, natural and nuclear disaster, fire, technical problems with transport, closure of ports, strikes and any industrial action, or any other event beyond the control of PONANT GROUP.

RATES: The prices given at the time of booking are based on economic conditions known on April 1, 2015 and are subject to change. These conditions are, amongst others, the cost of transport and fuel, relevant dues and taxes for the proposed operation (port taxes, embarkation and disembarkation taxes, entrance costs to tourist sites), currency exchange rates relevant to the pricing of these programs. PONANT GROUP reserves the right within the legal limits of applicable laws to vary the prices if necessary. All variation of the cost of transport, fuel, taxes, dues and visa costs will be passed on within the voyage cost. Additionally, any surcharge levied will be increased to include an amount to cover agent's commission. Any change in fare cannot be imposed less than 60 days prior to departure. For the cruise-only rate, daily surcharge, if any, will be calculated based on:

S= fuel variation* x daily consumption**

Ship capacity ***

[*]: MGO FOB Rotterdam 0,1% in US\$

[**]: L'AUSTRAL, LE BOREAL, LE LYRIAL, LE SOLEAL 20t

[***]: L'AUSTRAL, LE BOREAL, LE SOLEAL, LE LYRIAL: 244 passengers

JURISDICTION: These terms & conditions are subject to and interpreted according to International regulations and concern the transportation of passengers and their luggage from the time of boarding the ship to the moment of disembarking, as well as at ports of departure, destination, or stopover. PONANT GROUP shall incur no liability outside this period of time. Without prejudice to required legal regulations, any actions related either to the interpretation, or execution of this agreement shall be brought before the competent courts of Marseille-France.

PONANT GROUP is not responsible for omissions, printing and/or presentation errors and reserves the right to make corrections as required.

SHIPS' REGISTRY: France

FL Seller of Travel Ref No ST37706

CA Seller of Travel Ref No 2120712-40

REGISTRATION

WLUA16A06

Enclosed is my check or credit card no. for 25% of the program rate as a deposit to hold _____ place(s) on **A Summer Sojourn in Scandinavia**. I understand that final payment is due April 19, 2016.

Please make check payable to: **Ponant** and mail to:

The W&L Traveller, Office of Special Programs
204 West Washington St.
Washington and Lee University
Lexington, VA 24450

Telephone: (540) 458-8723

Fax: (540) 458-8478

E-mail: spclprog@wlu.edu

AmEx Visa MasterCard

No. _____

Exp. _____

3- or 4-Digit Security Code _____

Please select cabin category in order of preference (1st, 2nd & 3rd choice):

____ Superior Stateroom

____ Deluxe Stateroom w/balcony

____ Prestige Stateroom w/balcony - Deck 4

____ Prestige Stateroom w/balcony - Deck 5

____ Prestige Stateroom w/balcony - Deck 6

____ Deluxe Suite w/balcony

____ Prestige Suite w/balcony - Deck 5

____ Prestige Suite w/balcony - Deck 6

Twin Beds Double Bed

Single Occupancy

Share *(cannot be guaranteed)*

DR./MR./MRS./MS. FIRST LAST CLASS YEAR

DR./MR./MRS./MS. FIRST LAST

ADDRESS

CITY/STATE/ZIP

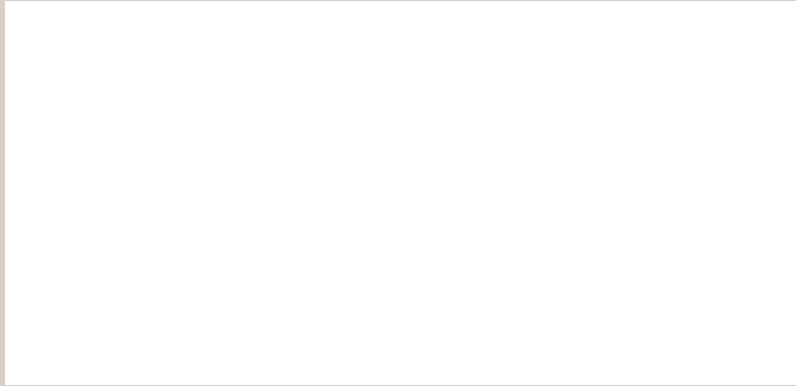
TELEPHONE (DAY) (EVENING)

E-MAIL

Each participant must sign below:
I/We have read the "Terms & Conditions" section and agree to its terms.

SIGNATURE DATE

SIGNATURE DATE



For information and reservations please contact us at
540-458-8723 or PONANT at 800-257-5767
www.wlu.edu/special-programs/wandl-traveller



A SUMMER SOJOURN IN SCANDINAVIA

A Celebration of Washington and Lee University

ABOARD THE DELUXE *L'AUSTRAL*

June 19 – 29, 2016